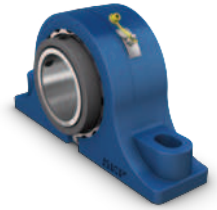


Type E interchange

Pillow block (2-bolt)



Shaft size			SKF	Dodge		Timken	Browning	Moline	Royersford
inch	mm	Housing shape	Part number	Part name	Part number	Part number	Part number	Part number	Part number
1 3/16		P2B	P2BE 103-TRB-STH	P2B-E-103R	023000	E-P2B-TRB-1 3/16	PBE920x1 3/16	19321103	20-02-0103
1 1/4		P2B	P2BE 104-TRB-STH	P2B-E-104R	023001	E-P2B-TRB-1 1/4	PBE920x1 1/4	19321104	20-02-0104
1 3/8		P2B	P2BE 106-TRB-STH	P2B-E-106R	023002	E-P2B-TRB-1 3/8	PBE920x1 3/8	19321106	20-02-0106
1 7/16		P2B	P2BE 107-TRB-STH	P2B-E-107R	023003	E-P2B-TRB-1 7/16	PBE920x1 7/16	19321107	20-02-0107
	35mm	P2B	P2BE 35M-TRB-STH	P2B-E-035MR	023620	E-P2B-TRB-35MM	–	19321035	25-02-0035
1 1/2		P2B	P2BE 108-TRB-STH	P2B-E-108R	023004	E-P2B-TRB-1 1/2	PBE920x1 1/2	19321108	20-02-0108
1 5/8		P2B	P2BE 110-TRB-STH	P2B-E-110R	023005	E-P2B-TRB-1 5/8	PBE920x1 5/8	19321110	20-02-0110
1 11/16		P2B	P2BE 111-TRB-STH	P2B-E-111R	023006	E-P2B-TRB-1 11/16	PBE920x1 11/16	19321111	20-02-0111
	40mm	P2B	P2BE 40M-TRB-STH	P2B-E-040MR	023621	E-P2B-TRB-40MM	–	19321040	25-02-0040
1 3/4		P2B	P2BE 112-TRB-STH	P2B-E-112R	023007	E-P2B-TRB-1 3/4	PBE920x1 3/4	19321112	20-02-0112
1 7/8		P2B	P2BE 114-TRB-STH	P2B-E-114R	023008	E-P2B-TRB-1 7/8	PBE920x1 7/8	19321114	20-02-0114
1 15/16		P2B	P2BE 115-TRB-STH	P2B-E-115R	023009	E-P2B-TRB-1 15/16	PBE920x1 15/16	19321115	20-02-0115
2		P2B	P2BE 200-TRB-STH	P2B-E-200R	023010	E-P2B-TRB-2	PBE920x2	19321200	20-02-0200
	45mm	P2B	P2BE 45M-TRB-STH	P2B-E-045MR	023622	E-P2B-TRB-45MM	–	19321045	25-02-0045
	50mm	P2B	P2BE 50M-TRB-STH	P2B-E-050MR	023623	E-P2B-TRB-50MM	–	19321050	25-02-0050
2 3/16		P2B	P2BE 203-TRB-STH	P2B-E-203R	023011	E-P2B-TRB-2 3/16	PBE920x2 3/16	19321203	20-02-0203
	55mm	P2B	P2BE 55M-TRB-STH	P2B-E-055MR	023624	E-P2B-TRB-55MM	–	19321055	25-02-0055
2 1/4		P2B	P2BE 204-TRB-STH	P2B-E-204R	023012	E-P2B-TRB-2 1/4	PBE920x2 1/4	19321204	20-02-0204
2 7/16		P2B	P2BE 207-TRB-STH	P2B-E-207R	023013	E-P2B-TRB-2 7/16	PBE920x2 7/16	19321207	20-02-0207
2 1/2		P2B	P2BE 208-TRB-STH	P2B-E-208R	023014	E-P2B-TRB-2 1/2	PBE920x2 1/2	19321208	20-02-0208
	60mm	P2B	P2BE 60M-TRB-STH	P2B-E-060MR	023625	E-P2B-TRB-60MM	–	19321060	25-02-0060
	65mm	P2B	P2BE 65M-TRB-STH	P2B-E-065MR	023626	E-P2B-TRB-65MM	–	19321065	25-02-0065
2 11/16		P2B	P2BE 211-TRB-STH	P2B-E-211R	023015	E-P2B-TRB-2 11/16	PBE920x2 11/16	19321211	20-02-0211
2 3/4		P2B	P2BE 212-TRB-STH	P2B-E-212R	023016	E-P2B-TRB-2 3/4	PBE920x2 3/4	19321212	20-02-0212
2 15/16		P2B	P2BE 215-TRB-STH	P2B-E-215R	023017	E-P2B-TRB-2 15/16	PBE920x2 15/16	19321215	20-02-0215
3		P2B	P2BE 300-TRB-STH	P2B-E-300R	023018	E-P2B-TRB-3	PBE920x3	19321300	20-02-0300
	70mm	P2B	P2BE 70M-TRB-STH	P2B-E-070MR	023627	E-P2B-TRB-70MM	–	19321070	25-02-0070
	75mm	P2B	P2BE 75M-TRB-STH	P2B-E-075MR	023628	E-P2B-TRB-75MM	–	19321075	25-02-0075
3 3/16		P2B	P2BE 303-TRB-STH	P2B-E-303R	023019	E-P2B-TRB-3 3/16	PBE920x3 3/16	19321303	20-02-0303
3 1/4		P2B	P2BE 304-TRB-STH	P2B-E-304R	023020	E-P2B-TRB-3 1/4	PBE920x3 1/4	19321304	20-02-0304
3 7/16		P2B	P2BE 307-TRB-STH	P2B-E-307R	023021	E-P2B-TRB-3 7/16	PBE920x3 7/16	19321307	20-02-0307
3 1/2		P2B	P2BE 308-TRB-STH	P2B-E-308R	023022	E-P2B-TRB-3 1/2	PBE920x3 1/2	19321308	20-02-0308
	80mm	P2B	P2BE 80M-TRB-STH	P2B-E-080MR	023629	E-P2B-TRB-80MM	–	19321080	25-02-0080
	85mm	P2B	P2BE 85M-TRB-STH	P2B-E-085MR	023630	E-P2B-TRB-85MM	–	19321085	25-02-0085
	90mm	P2B	P2BE 90M-TRB-STH	P2B-E-090MR	023631	E-P2B-TRB-90MM	–	19321090	25-02-0090

© SKF is a registered trademark of the SKF Group.

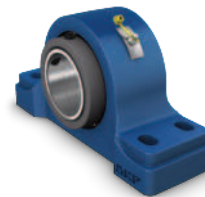
Browning is a trademark of Regal Beloit America, Inc. Dodge is a trademark of ABB Asea Brown Boveri Ltd. Moline is a trademark of Moline Bearing Company. Royersford is a trademark of Royersford Foundry & Machine Co., Inc. Timken is a trademark of The Timken Company.

© SKF USA Inc. 2021

The contents of this publication are the copyright of the publisher and may not be reproduced (even extracts) unless prior written permission is granted. Every care has been taken to ensure the accuracy of the information contained in this publication but no liability can be accepted for any loss or damage whether direct, indirect or consequential arising out of the use of the information contained herein.

Type E interchange

Pillow block (4-bolt)



Shaft size			SKF	Dodge		Timken	Browning	Moline	Royersford
inch	mm	Housing shape	Part number	Part name	Part number	Part number	Part number	Part number	Part number
2 1/4		P4B	P4BE 204-TRB-STH	P4B-E-204R	023023	E-P4B-TRB-2 1/4	PBE920Fx2 1/4	19341204	20-04-0204
2 7/16		P4B	P4BE 207-TRB-STH	P4B-E-207R	023024	E-P4B-TRB-2 7/16	PBE920Fx2 7/16	19341207	20-04-0207
2 1/2		P4B	P4BE 208-TRB-STH	P4B-E-208R	023025	E-P4B-TRB-2 1/2	PBE920Fx2 1/2	19341208	20-04-0208
	60mm	P4B	P4BE 60M-TRB-STH	–	–	E-P4B-TRB-60MM	–	19341060	25-04-0060
	65mm	P4B	P4BE 65M-TRB-STH	–	–	E-P4B-TRB-65MM	–	19341065	25-04-0065
2 11/16		P4B	P4BE 211-TRB-STH	P4B-E-211R	023026	E-P4B-TRB-2 11/16	PBE920Fx2 11/16	19341211	20-04-0211
2 3/4		P4B	P4BE 212-TRB-STH	P4B-E-212R	023027	E-P4B-TRB-2 3/4	PBE920Fx2 3/4	19341212	20-04-0212
2 15/16		P4B	P4BE 215-TRB-STH	P4B-E-215R	023028	E-P4B-TRB-2 15/16	PBE920Fx2 15/16	19341215	20-04-0215
3		P4B	P4BE 300-TRB-STH	P4B-E-300R	023029	E-P4B-TRB-3	PBE920Fx3	19341300	20-04-0300
	70mm	P4B	P4BE 70M-TRB-STH	–	–	E-P4B-TRB-70MM	–	19341070	25-04-0070
	75mm	P4B	P4BE 75M-TRB-STH	–	–	E-P4B-TRB-75MM	–	19341075	25-04-0075
3 3/16		P4B	P4BE 303-TRB-STH	P4B-E-303R	023030	E-P4B-TRB-3 3/16	PBE920Fx3 3/16	19341303	20-04-0303
3 1/4		P4B	P4BE 304-TRB-STH	P4B-E-304R	023031	E-P4B-TRB-3 1/4	PBE920Fx3 1/4	19341304	20-04-0304
3 7/16		P4B	P4BE 307-TRB-STH	P4B-E-307R	023032	E-P4B-TRB-3 7/16	PBE920Fx3 7/16	19341307	20-04-0307
3 1/2		P4B	P4BE 308-TRB-STH	P4B-E-308R	023033	E-P4B-TRB-3 1/2	PBE920Fx3 1/2	19341308	20-04-0308
	80mm	P4B	P4BE 80M-TRB-STH	–	–	E-P4B-TRB-80MM	–	19341080	25-04-0080
	85mm	P4B	P4BE 85M-TRB-STH	–	–	E-P4B-TRB-85MM	–	19341085	25-04-0085
	90mm	P4B	P4BE 90M-TRB-STH	–	–	E-P4B-TRB-90MM	–	19341090	25-04-0090
3 15/16		P4B	P4BE 315-TRB-STH	P4B-E-315R	023690	E-P4B-TRB-3 15/16	PBE920Fx3 15/16	19341315	20-04-0315
4		P4B	P4BE 400-TRB-STH	P4B-E-400R	023691	E-P4B-TRB-4	PBE920Fx4	19341400	20-04-0400
	100mm	P4B	P4BE 100M-TRB-STH	P4B-E-100MR	023632	E-P4B-TRB-100MM	–	19341100	25-04-0100
4 7/16		P4B	P4BE 407-TRB-STH	P4B-E-407R	023692	E-P4B-TRB-4 7/16	PBE920Fx4 7/16	19341407	20-04-0407
4 1/2		P4B	P4BE 408-TRB-STH	P4B-E-408R	023693	E-P4B-TRB-4 1/2	PBE920Fx4 1/2	19341408	20-04-0408
	110mm	P4B	P4BE 110M-TRB-STH	P4B-E-110MR	023633	E-P4B-TRB-110MM	–	19341110	25-04-0110
	115mm	P4B	P4BE 115M-TRB-STH	P4B-E-115MR	023634	E-P4B-TRB-115MM	–	19341115	25-04-0115
4 15/16		P4B	P4BE 415-TRB-STH	P4B-E-415R	023694	E-P4B-TRB-4 15/16	PBE920Fx4 15/16	19341415	20-04-0415
5		P4B	P4BE 500-TRB-STH	P4B-E-500R	023695	E-P4B-TRB-5	PBE920Fx5	19341500	20-04-0500
	125mm	P4B	P4BE 125M-TRB-STH	P4B-E-125MR	023635	E-P4B-TRB-125MM	–	19341125	25-04-0125

© SKF is a registered trademark of the SKF Group.

Browning is a trademark of Regal Beloit America, Inc. Dodge is a trademark of ABB Asea Brown Boveri Ltd. Moline is a trademark of Moline Bearing Company. Royersford is a trademark of Royersford Foundry & Machine Co., Inc. Timken is a trademark of The Timken Company.

© SKF USA Inc. 2021

The contents of this publication are the copyright of the publisher and may not be reproduced (even extracts) unless prior written permission is granted. Every care has been taken to ensure the accuracy of the information contained in this publication but no liability can be accepted for any loss or damage whether direct, indirect or consequential arising out of the use of the information contained herein.



Type E interchange

Piloted flange (4- and 6-bolt)

Shaft size			SKF		Dodge	Timken	Moline	Royersford
inch	mm	Housing shape	Part number	Part name	Part number	Part number	Part number	Part number
1-3/16		F4BRP	F4BRPE 103-TRB-STH	FC-E-103R	023120	E-PF-TRB-1 3/16	–	20-06-0103
1-1/4		F4BRP	F4BRPE 104-TRB-STH	FC-E-104R	023121	E-PF-TRB-1 1/4	–	20-06-0104
1-3/8		F4BRP	F4BRPE 106-TRB-STH	FC-E-106R	023122	E-PF-TRB-1 3/8	–	20-06-0106
1-7/16		F4BRP	F4BRPE 107-TRB-STH	FC-E-107R	023123	E-PF-TRB-1 7/16	–	20-06-0107
	35mm	F4BRP	F4BRPE 35M-TRB-STH	–	–	E-PF-TRB-35MM	–	25-06-0035
1-1/2		F4BRP	F4BRPE 108-TRB-STH	FC-E-108R	023124	E-PF-TRB-1 1/2	19331108	20-06-0108
1-5/8		F4BRP	F4BRPE 110-TRB-STH	FC-E-110R	023125	E-PF-TRB-1 5/8	19331110	20-06-0110
1-11/16		F4BRP	F4BRPE 111-TRB-STH	FC-E-111R	023126	E-PF-TRB-1 11/16	19331111	20-06-0111
	40mm	F4BRP	F4BRPE 40M-TRB-STH	–	–	E-PF-TRB-40MM	19331040	25-06-0040
1-3/4		F4BRP	F4BRPE 112-TRB-STH	FC-E-112R	023127	E-PF-TRB-1 3/4	19331112	20-06-0112
1-7/8		F4BRP	F4BRPE 114-TRB-STH	FC-E-114R	023128	E-PF-TRB-1 7/8	19331114	20-06-0114
1-15/16		F4BRP	F4BRPE 115-TRB-STH	FC-E-115R	023129	E-PF-TRB-1 15/16	19331115	20-06-0115
2		F4BRP	F4BRPE 200-TRB-STH	FC-E-200R	023130	E-PF-TRB-2	19331200	20-06-0200
	45mm	F4BRP	F4BRPE 45M-TRB-STH	–	–	E-PF-TRB-45MM	19331045	25-06-0045
	50mm	F4BRP	F4BRPE 50M-TRB-STH	–	–	E-PF-TRB-50MM	19331050	25-06-0050
2-3/16		F4BRP	F4BRPE 203-TRB-STH	FC-E-203R	023131	E-PF-TRB-2 3/16	19331203	20-06-0203
	55mm	F4BRP	F4BRPE 55M-TRB-STH	–	–	E-PF-TRB-55MM	19331055	25-06-0055
2-1/4		F4BRP	F4BRPE 204-TRB-STH	FC-E-204R	023132	E-PF-TRB-2 1/4	19331204	20-06-0204
2-7/16		F4BRP	F4BRPE 207-TRB-STH	FC-E-207R	023133	E-PF-TRB-2 7/16	19331207	20-06-0207
2-1/2		F4BRP	F4BRPE 208-TRB-STH	FC-E-208R	023134	E-PF-TRB-2 1/2	19331208	20-06-0208
	60mm	F4BRP	F4BRPE 60M-TRB-STH	–	–	E-PF-TRB-60MM	19331060	25-06-0060
	65mm	F4BRP	F4BRPE 65M-TRB-STH	–	–	E-PF-TRB-65MM	19331065	25-06-0065
2-11/16		F4BRP	F4BRPE 211-TRB-STH	FC-E-211R	023135	E-PF-TRB-2 11/16	19331211	20-06-0211
2-3/4		F4BRP	F4BRPE 212-TRB-STH	FC-E-212R	023136	E-PF-TRB-2 3/4	19331212	20-06-0212
2-15/16		F4BRP	F4BRPE 215-TRB-STH	FC-E-215R	023137	E-PF-TRB-2 15/16	19331215	20-06-0215
3		F4BRP	F4BRPE 300-TRB-STH	FC-E-300R	023138	E-PF-TRB-3	19331300	20-06-0300
	70mm	F4BRP	F4BRPE 70M-TRB-STH	–	–	E-PF-TRB-70MM	19331070	25-06-0070
	75mm	F4BRP	F4BRPE 75M-TRB-STH	–	–	E-PF-TRB-75MM	19331075	25-06-0075
3-3/16		F4BRP	F4BRPE 303-TRB-STH	FC-E-303R	023139	E-PF-TRB-3 3/16	19331303	20-06-0303
3-1/4		F4BRP	F4BRPE 304-TRB-STH	FC-E-304R	023140	E-PF-TRB-3 1/4	19331304	20-06-0304
3-7/16		F4BRP	F4BRPE 307-TRB-STH	FC-E-307R	023141	E-PF-TRB-3 7/16	19331307	20-06-0307
3-1/2		F4BRP	F4BRPE 308-TRB-STH	FC-E-308R	023142	E-PF-TRB-3 1/2	19331308	20-06-0308
	80mm	F4BRP	F4BRPE 80M-TRB-STH	–	–	E-PF-TRB-80MM	19331080	25-06-0080
	85mm	F4BRP	F4BRPE 85M-TRB-STH	–	–	E-PF-TRB-85MM	19331085	25-06-0085
	90mm	F4BRP	F4BRPE 90M-TRB-STH	–	–	E-PF-TRB-90MM	19331090	25-06-0090
3-15/16		F4BRP	F4BRPE 315-TRB-STH	FC-E-315R	023143	E-PF-TRB-3 15/16	19331315	20-06-0315
4		F4BRP	F4BRPE 400-TRB-STH	FC-E-400R	023144	E-PF-TRB-4	19331400	20-06-0400
	100mm	F4BRP	F4BRPE 100M-TRB-STH	–	–	E-PF-TRB-100MM	19331100	25-06-0100
4-7/16		F6BRP	F6BRPE 407-TRB-STH	FC-E-407R	023145	E-PF-TRB-4 7/16	19331407	20-06-0407
4-1/2		F6BRP	F6BRPE 408-TRB-STH	FC-E-408R	023146	E-PF-TRB-4 1/2	19331408	20-06-0408
	110mm	F6BRP	F6BRPE 110M-TRB-STH	–	–	E-PF-TRB-110MM	19331110M	25-06-0110
	115mm	F6BRP	F6BRPE 115M-TRB-STH	–	–	E-PF-TRB-115MM	19331115M	25-06-0115
4-15/16		F6BRP	F6BRPE 415-TRB-STH	FC-E-415R	023147	E-PF-TRB-4 15/16	19331415	20-06-0415
5		F6BRP	F6BRPE 500-TRB-STH	FC-E-500R	023148	E-PF-TRB-5	19331500	20-06-0500
	125mm	F6BRP	F6BRPE 125M-TRB-STH	–	–	E-PF-TRB-125MM	19331125	25-06-0125

© SKF is a registered trademark of the SKF Group.

Browning is a trademark of Regal Beloit America, Inc. Dodge is a trademark of ABB Asea Brown Boveri Ltd. Moline is a trademark of Moline Bearing Company. Royersford is a trademark of Royersford Foundry & Machine Co., Inc. Timken is a trademark of The Timken Company.

© SKF USA Inc. 2021

The contents of this publication are the copyright of the publisher and may not be reproduced (even extracts) unless prior written permission is granted. Every care has been taken to ensure the accuracy of the information contained in this publication but no liability can be accepted for any loss or damage whether direct, indirect or consequential arising out of the use of the information contained herein.

Type E interchange

Flange (4-bolt)



Shaft size			SKF	Dodge		Timken	Browning	Moline	Royersford
inch	mm	Housing shape	Part number	Part name	Part number	Part number	Part number	Part number	Part number
1 3/16		F4B	F4BE 103-TRB-STH	F4B-E-103R	023093	E-4BF-TRB-1 3/16	FBE-920x1 3/16	19311103	20-05-0103
1 1/4		F4B	F4BE 104-TRB-STH	F4B-E-104R	023094	E-4BF-TRB-1 1/4	FBE920x1 1/4	19311104	20-05-0104
1 3/8		F4B	F4BE 106-TRB-STH	F4B-E-106R	023095	E-4BF-TRB-1 3/8	FBE920x1 3/8	19311106	20-05-0106
1 7/16		F4B	F4BE 107-TRB-STH	F4B-E-107R	023096	E-4BF-TRB-1 7/16	FBE920x-1 7/16	19311107	20-05-0107
	35mm	F4B	F4BE 35M-TRB-STH	–	–	E-4BF-TRB-35MM	–	19311035	25-05-0035
1 1/2		F4B	F4BE 108-TRB-STH	F4B-E-108R	023097	E-4BF-TRB-1 1/2	FBE920x1 1/2	19311108	20-05-0108
1 5/8		F4B	F4BE 110-TRB-STH	F4B-E-110R	023098	E-4BF-TRB-1 5/8	FBE920x1 5/8	19311110	20-05-0110
1 11/16		F4B	F4BE 111-TRB-STH	F4B-E-111R	023099	E-4BF-TRB-1 11/16	FBE920x1 11/16	19311111	20-05-0111
	40mm	F4B	F4BE 40M-TRB-STH	–	–	E-4BF-TRB-40MM	–	19311040	25-05-0040
1 3/4		F4B	F4BE 112-TRB-STH	F4B-E-112R	023100	E-4BF-TRB-1 3/4	FBE920x1 3/4	19311112	20-05-0112
1 7/8		F4B	F4BE 114-TRB-STH	F4B-E-114R	023101	E-4BF-TRB-1 7/8	FBE920x1 7/8	19311114	20-05-0114
1 15/16		F4B	F4BE 115-TRB-STH	F4B-E-115R	023102	E-4BF-TRB-1 15/16	FBE920x1 15/16	19311115	20-05-0115
2		F4B	F4BE 200-TRB-STH	F4B-E-200R	023103	E-4BF-TRB-2	FBE920x2	19311200	20-05-0200
	45mm	F4B	F4BE 45M-TRB-STH	–	–	E-4BF-TRB-45MM	–	19311045	25-05-0045
	50mm	F4B	F4BE 50M-TRB-STH	–	–	E-4BF-TRB-50MM	–	19311050	25-05-0050
2 3/16		F4B	F4BE 203-TRB-STH	F4B-E-203R	023104	E-4BF-TRB-2 3/16	FBE920x2 3/16	19311203	20-05-0203
	55mm	F4B	F4BE 55M-TRB-STH	–	–	E-4BF-TRB-55MM	–	19311055	25-05-0055
2 1/4		F4B	F4BE 204-TRB-STH	F4B-E-204R	023105	E-4BF-TRB-2 1/4	FBE920x2 1/4	19311204	20-05-0204
2 7/16		F4B	F4BE 207-TRB-STH	F4B-E-207R	023106	E-4BF-TRB-2 7/16	FBE920x2 7/16	19311207	20-05-0207
2 1/2		F4B	F4BE 208-TRB-STH	F4B-E-208R	023107	E-4BF-TRB-2 1/2	FBE920x2 1/2	19311208	20-05-0208
	60mm	F4B	F4BE 60M-TRB-STH	–	–	E-4BF-TRB-60MM	–	19311060	25-05-0060
	65mm	F4B	F4BE 65M-TRB-STH	–	–	E-4BF-TRB-65MM	–	19311065	25-05-0065
2 11/16		F4B	F4BE 211-TRB-STH	F4B-E-211R	023108	E-4BF-TRB-2 11/16	FBE920x2 11/16	19311211	20-05-0211
2 3/4		F4B	F4BE 212-TRB-STH	F4B-E-212R	023109	E-4BF-TRB-2 3/4	FBE920x2 3/4	19311212	20-05-0212
2 15/16		F4B	F4BE 215-TRB-STH	F4B-E-215R	023110	E-4BF-TRB-2 15/16	FBE920x2 15/16	19311215	20-05-0215
3		F4B	F4BE 300-TRB-STH	F4B-E-300R	023111	E-4BF-TRB-3	FBE920x3	19311300	20-05-0300
	70mm	F4B	F4BE 70M-TRB-STH	–	–	E-4BF-TRB-70MM	–	19311070	25-05-0070
	75mm	F4B	F4BE 75M-TRB-STH	–	–	E-4BF-TRB-75MM	–	19311075	25-05-0075
3 3/16		F4B	F4BE 303-TRB-STH	F4B-E-303R	023112	E-4BF-TRB-3 3/16	FBE920x3 3/16	19311303	20-05-0303
3 1/4		F4B	F4BE 304-TRB-STH	F4B-E-304R	023113	E-4BF-TRB-3 1/4	FBE920x3 1/4	19311304	20-05-0304
3 7/16		F4B	F4BE 307-TRB-STH	F4B-E-307R	023114	E-4BF-TRB-3 7/16	FBE920x3 7/16	19311307	20-05-0307
3 1/2		F4B	F4BE 308-TRB-STH	F4B-E-308R	023115	E-4BF-TRB-3 1/2	FBE920x3 1/2	19311308	20-05-0308
	80mm	F4B	F4BE 80M-TRB-STH	–	–	E-4BF-TRB-80MM	–	19311080	25-05-0080
	85mm	F4B	F4BE 85M-TRB-STH	–	–	E-4BF-TRB-85MM	–	19311085	25-05-0085
	90mm	F4B	F4BE 90M-TRB-STH	–	–	E-4BF-TRB-90MM	–	19311090	25-05-0090
3 15/16		F4B	F4BE 315-TRB-STH	F4B-E-315R	023116	E-4BF-TRB-3 15/16	FBE920x3 15/16	19311315	20-05-0315
4		F4B	F4BE 400-TRB-STH	F4B-E-400R	023117	E-4BF-TRB-4	FBE920x4	19311400	20-05-0400
	100mm	F4B	F4BE 100M-TRB-STH	–	–	E-4BF-TRB-100MM	–	19311100	25-05-0100
4 7/16		F4B	F4BE 407-TRB-STH	F4B-E-407R	023118	E-4BF-TRB-4 7/16	–	19311407	20-05-0407
4 1/2		F4B	F4BE 408-TRB-STH	F4B-E-408R	023119	E-4BF-TRB-4 1/2	–	19311408	20-05-0408
	110mm	F4B	F4BE 110M-TRB-STH	–	–	E-4BF-TRB-110MM	–	19311110M	25-05-0110
	115mm	F4B	F4BE 115M-TRB-STH	–	–	E-4BF-TRB-115MM	–	19311115M	25-05-0115

© SKF is a registered trademark of the SKF Group.

Browning is a trademark of Regal Beloit America, Inc. Dodge is a trademark of ABB Asea Brown Boveri Ltd. Moline is a trademark of Moline Bearing Company. Royersford is a trademark of Royersford Foundry & Machine Co., Inc. Timken is a trademark of The Timken Company.

© SKF USA Inc. 2021

The contents of this publication are the copyright of the publisher and may not be reproduced (even extracts) unless prior written permission is granted. Every care has been taken to ensure the accuracy of the information contained in this publication but no liability can be accepted for any loss or damage whether direct, indirect or consequential arising out of the use of the information contained herein.

Type E interchange

Top angle take-up



Shaft size			SKF		Dodge	Timken
inch	mm	Housing shape	Part number	Part name	Part number	Part number
1 3/4		TATU	TATUE 112-TRB-STH	TP-E-112R	023149	E-TTU-TRB-1 3/4
1 7/8		TATU	TATUE 114-TRB-STH	TP-E-114R	023150	E-TTU-TRB-1 7/8
1 15/16		TATU	TATUE 115-TRB-STH	TP-E-115R	023151	E-TTU-TRB-1 15/16
2		TATU	TATUE 200-TRB-STH	TP-E-200R	023152	E-TTU-TRB-2
	45mm	TATU	TATUE 45M-TRB-STH			E-TTU-TRB-45MM
	50mm	TATU	TATUE 50M-TRB-STH			E-TTU-TRB-50MM
2 3/16		TATU	TATUE 203-TRB-STH	TP-E-203R	023153	E-TTU-TRB-2 3/16
	55mm	TATU	TATUE 55M-TRB-STH			E-TTU-TRB-55MM
2 1/4		TATU	TATUE 204-TRB-STH	TP-E-204R	023154	E-TTU-TRB-2 1/4
2 7/16		TATU	TATUE 207-TRB-STH	TP-E-207R	023155	E-TTU-TRB-2 7/16
2 1/2		TATU	TATUE 208-TRB-STH	TP-E-208R	023156	E-TTU-TRB-2 1/2
	60mm	TATU	TATUE 60M-TRB-STH			E-TTU-TRB-60MM
	65mm	TATU	TATUE 65M-TRB-STH			E-TTU-TRB-65MM
2 11/16		TATU	TATUE 211-TRB-STH	TP-E-211R	023157	E-TTU-TRB-2 11/16
2 3/4		TATU	TATUE 212-TRB-STH	TP-E-212R	023158	E-TTU-TRB-2 3/4
2 15/16		TATU	TATUE 215-TRB-STH	TP-E-215R	023159	E-TTU-TRB-2 15/16
3		TATU	TATUE 300-TRB-STH	TP-E-300R	023160	E-TTU-TRB-3
	70mm	TATU	TATUE 70M-TRB-STH			E-TTU-TRB-70MM
	75mm	TATU	TATUE 75M-TRB-STH			E-TTU-TRB-75MM
3 3/16		TATU	TATUE 303-TRB-STH	TP-E-303R	023161	E-TTU-TRB-3 3/16
3 1/4		TATU	TATUE 304-TRB-STH	TP-E-304R	023162	E-TTU-TRB-3 1/4
3 7/16		TATU	TATUE 307-TRB-STH	TP-E-307R	023163	E-TTU-TRB-3 7/16
3 1/2		TATU	TATUE 308-TRB-STH	TP-E-308R	023164	E-TTU-TRB-3 1/2
	80mm	TATU	TATUE 80M-TRB-STH			E-TTU-TRB-80MM
	85mm	TATU	TATUE 85M-TRB-STH			E-TTU-TRB-85MM
	90mm	TATU	TATUE 90M-TRB-STH			E-TTU-TRB-90MM
3 15/16		TATU	TATUE 315-TRB-STH	TP-E-315R	023165	E-TTU-TRB-3 15/16
4		TATU	TATUE 400-TRB-STH	TP-E-400R	023166	E-TTU-TRB-4
	100mm	TATU	TATUE 100M-TRB-STH			E-TTU-TRB-100MM

© SKF is a registered trademark of the SKF Group.

Browning is a trademark of Regal Beloit America, Inc. Dodge is a trademark of ABB Asea Brown Boveri Ltd. Moline is a trademark of Moline Bearing Company. Royersford is a trademark of Royersford Foundry & Machine Co., Inc. Timken is a trademark of The Timken Company.

© SKF USA Inc. 2021

The contents of this publication are the copyright of the publisher and may not be reproduced (even extracts) unless prior written permission is granted. Every care has been taken to ensure the accuracy of the information contained in this publication but no liability can be accepted for any loss or damage whether direct, indirect or consequential arising out of the use of the information contained herein.